



Simply Connected

Quick Install Guide

XGS-1024S

24 Port Gigabit Flex Mount Switch



- Expand Your Home or Office Network with 24 Gigabit Ethernet Ports
- Future Proof Your Network with Gigabit Speeds (10X Performance of Fast Ethernet)
- Set-up a Dedicated Network for Optimizing VoIP, Video, Security, or Gaming Applications.

Quick Install Guide

Model Number: XGS-1024S

24 Port Gigabit Flex Mount Switch

© 2014 Luxul. All Rights Reserved.

No part of this publication may be modified or adapted in any way, for any purposes without permission in writing from Luxul. The material in this manual is subject to change without notice. Luxul reserves the right to make changes to any product to improve reliability, function, or design. No license is granted, either expressly or by implication or otherwise under any Luxul intellectual property rights. An implied license only exists for equipment, circuits and subsystems contained in this or any Luxul product.

DOCUMENT CONVENTIONS

The following graphical alerts are used in this document to indicate notable situations:



NOTE: Tips, hints, or special requirements that you should take note of.



CAUTION: Care is required. Disregarding a caution can result in data loss or equipment malfunction.



WARNING! Indicates a condition or procedure that could result in personal injury or equipment damage.

FCC COMPLIANCE

This device complies with Part 15 of the FCC Rules. Operation is subject to the following two conditions: (1) this device may not cause harmful interference, and (2) this device must accept any interference received, including interference that may cause undesired operation.

CONTACT LUXUL

Sales

P: (801) 822-5450

E: sales@luxul.com

Technical Support

P: (801) 822-5450

E: support@luxul.com

PACKAGE CONTENTS

Please check the contents carefully after you open the packing:

- ▶ One XGS-1024S 24 Port Gigabit Flex Mount Switch
- ▶ Power Cord
- ▶ Two L-shaped rack mounting brackets and screws
- ▶ Four rubber pads
- ▶ Quick Installation Guide

If any of the listed items are missing or damaged, please contact the reseller from whom you purchased the XGS-1024S for return/replacement.

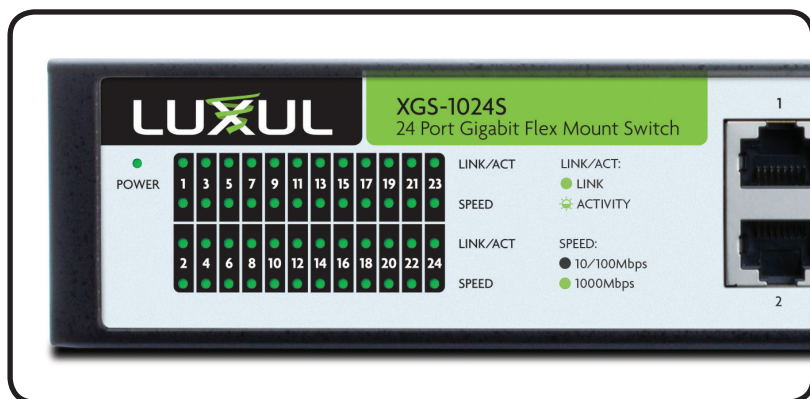
HARDWARE DESCRIPTION

Front Panel

The front panel of the XGS-1024S includes 24 10/100/1000Mbps RJ45 ports on the right side and LED indicators on the left side. Each port has one Link/Activity LED and one Speed LED. There is also a power LED for indicating whether or not power is being applied to the XGS-1024S.

LED Indicators

The LED indicators of the XGS-1024S include one Power indicator, 24 Link/Activity and 24 1000Mbps Speed indicators. These LED indicators show the operating status of the XGS-1024S and each switch connection.



The following chart shows the LED indicators of the XGS-1024S along with an explanation of the indicator's properties:

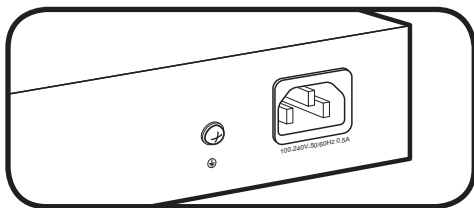
| LED | Status | Description |
|---------------|----------|---|
| Power LED | ON | This indicator lights up when the XGS-1024S is properly powered. |
| | OFF | If this indicator is not lit, please check the AC power cord to ensure proper connection to the outlet and the XGS-1024S. |
| Link/Activity | ON | Indicates a device is connected to the port of the XGS-1024S |
| | Blinking | Indicates the port is transmitting or receiving data. |
| | OFF | Indicates the port is not connected to a device. |
| Speed | ON | Indicates the XGS-1024S is connected to the device at 1000Mbps. |
| | OFF | Indicates no device connected or the connected device does not support 1000Mbps and is connected at something less than 1000Mbps. |

Rear Panel Layout

The rear panel has one AC power port and one grounding terminal.



NOTE: If the Switch is installed in a location where a ground connection is available, the grounding terminal can be used to connect the switch to ground.



CAUTION: Please use the correct power cord for your environment. If any voltage other than 100/240 is applied, it will result in damage to the XGS-1024S.

PREPARING FOR INSTALLATION

Requirements

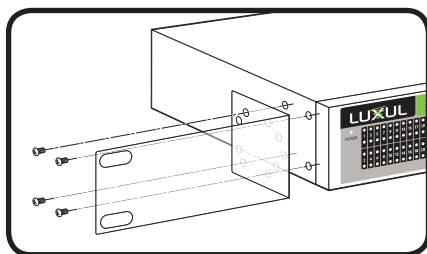
- Power must be AC 100-240V 50/60Hz.

XGS-1024S INSTALLATION

The XGS-1024S is designed for flexible mounting options. It can easily be mounted in a standard 19" rack, on a wall or simply placed on a flat surface using the included Mounting brackets or rubber foot pads.

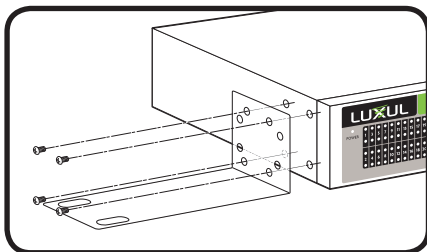
Rack Mounting

For mounting the switch in a rack, use the included screws to attach the mounting brackets to the sides of the switch so that the surface of the bracket with rack mounting holes is flush to the front of the XGS-1024S. Then using your rack screws mount the switch in the rack with the LEDs facing outward, making sure the switch is properly secured within the rack.



Wall Mount

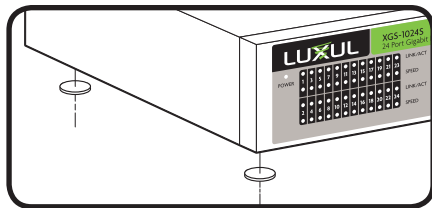
The included mounting brackets are pre-drilled so that they can be rotated 90 degrees and used to attach the XGS-1024S securely to a wall or flat surface. Using the included screws, attach the mounting brackets to the side of the switch so the surface of the bracket with rack mounting holes is flush to the bottom or top of the XGS-1024S. Then mount the switch so that the LEDs and RJ45 ports are easily accessible.



WARNING!: Do not obstruct the air vent holes on the back or sides of the unit.

Desktop Setup

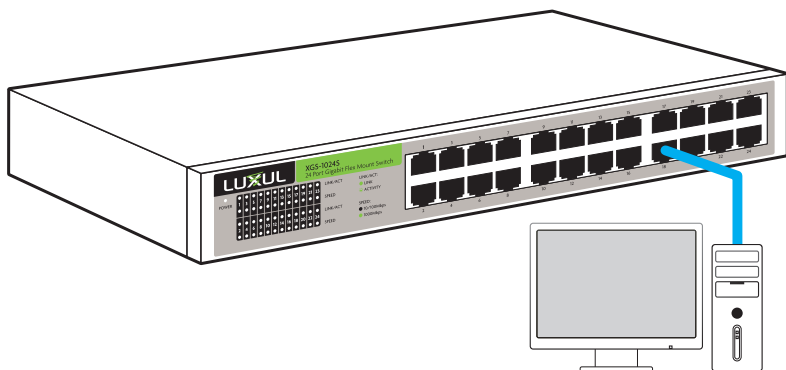
For use as a desktop switch, apply the included rubber feet to the bottom of the XGS-1024S



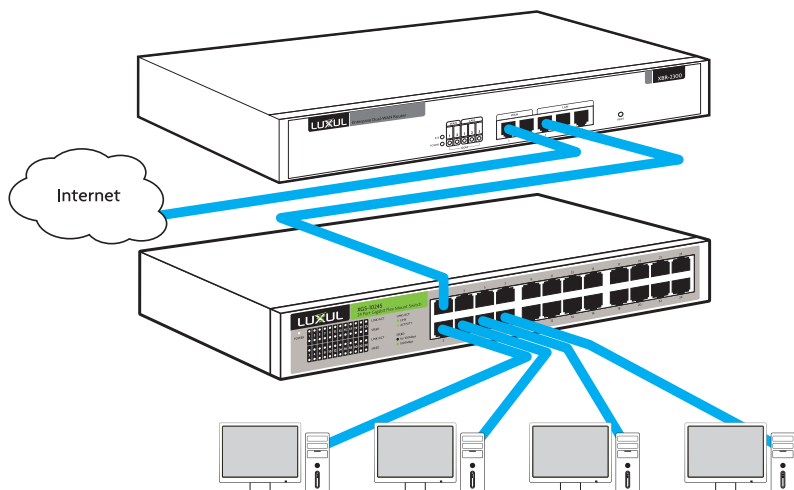
WARNING! Do not obstruct the air vent holes on the back or sides of the unit.

Connecting Devices

Use standard Ethernet CAT5, CAT5e, or CAT6 cable to connect the XGS-1024S to a device as described below (CAT6 must be used in order to achieve full Gigabit bandwidth). The XGS-1024S will automatically adjust to the characteristics (speed/duplex) of the device to which it is connected.



Connecting to a Router or Other Switch



When a device is properly connected, the Link/Activity LED for each port lights up. Please refer to the LED Indicators section for indicator definitions and troubleshooting.

WARNINGS AND SAFETY INFORMATION

- ▶ Verify that the electrical circuits have appropriate grounding and overload protection.
- ▶ Attach only approved power cords to the device.
- ▶ Verify there is adequate ventilation around the device, and that ambient temperatures meet equipment operation specifications.
- ▶ The XGS-1024S is designed for indoor use only. DO NOT place this outdoors.
- ▶ DO NOT install in or near hot or humid places, such as a kitchen or bathroom. Take care to minimize exposure to excessive heat or moisture.
- ▶ Small parts and plastic bags used for packaging may be harmful to small children. KEEP ALL ACCESSORIES OUT OF THE REACH OF CHILDREN!
- ▶ The XGS-1024S may become warm when in use for extended time periods. This is normal and is not a malfunction. DO NOT install where it will be exposed to paper, cloth or other flammable materials.

FCC Statement:

This equipment has been tested and found to comply with the limits for a Class B digital device, pursuant to part 15 of the FCC Rules. These limits are designed to provide reasonable protection against harmful interference in a residential installation. This equipment uses and can radiate radio frequency energy, and if not installed and used in accordance with the instructions may cause harmful interference to radio communications. However, there is no guarantee that interference will not occur in a particular installation. If this equipment does cause harmful interference to radio or television reception, which can be determined by turning the equipment off and on, the user is encouraged to try to correct the interference by one or more of the following measures:

- ▶ Reorient or relocate the receiving antenna.
- ▶ Increase the separation between the equipment and receiver.
- ▶ Connect the equipment into an outlet on a circuit different from that to which the receiver is connected.
- ▶ Consult the dealer or an experienced radio/TV technician for help.



Hereby, Luxul, 14203 Minuteman Drive, Suite 201, Draper, Utah, 84020, declares that this Luxul XAP-1500 is in compliance with the essential requirements and other relevant provisions of Directive 1999/5/EC.

For a copy of this report send a self addressed stamped envelope to:
Luxul CE, 14203 Minuteman Drive, Suite 201, Draper, Utah, 84020.

Information on this document supersedes all previous versions. Products and documents subject to change without notice. Products may be discontinued without notice.