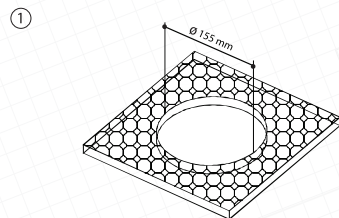


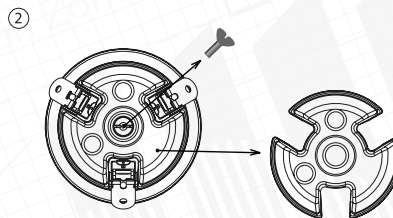
MCR 4EN metal ceiling loudspeakers

AMC 2014-001 Revision 2025-08-05

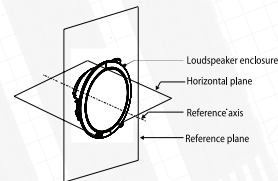
EN54-24:2008
1438-CPR-1120
ISSUE DATE:2025-06-18
TYPE A



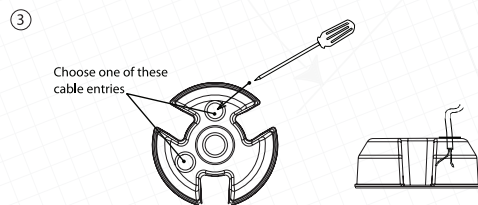
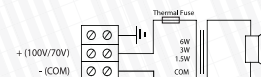
Cut the 155 mm diameter hole in the ceiling.



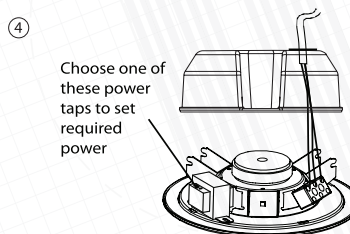
Unscrew bold and remove dome.



MCR 4EN Circuit diagram



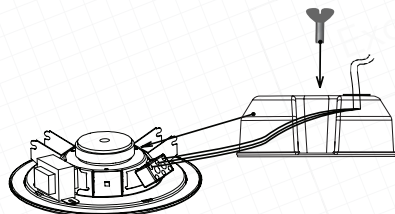
Make the small hole by using awl in the rubber seal and pass through it the cable.



Connect cable with ceramic terminal and set required power output on the line transformer.

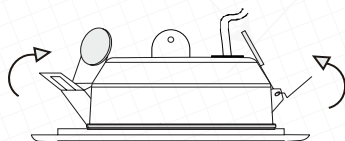
MCR 4EN metal ceiling loudspeakers

⑤



Place the dome on the loudspeaker and fix it with the screw.

⑥

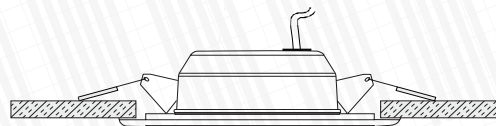


Lift all speaker's mounting clamps.

⑦



Carfully push loudspeaker into the hole, until the springs fix it.



Picture: mounted loudspeaker

Please pay attention: Mount the loudspeaker on the reliable base only.

Other technical data: see on doc. AMC 2017 - 03
Declaration of performance No.: AMC-1611

AMC Baltic Neries krantinė 14A, LT-48397 Kaunas, Lithuania **Phone** +370 37 308585, 308584 **E-mail** info@amcpro.eu **Web** www.amcpro.eu