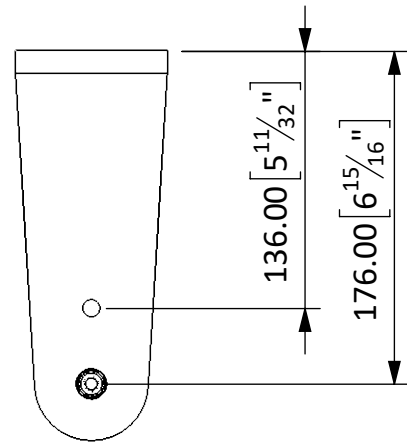




FF

TITLE: <b>Yoke Bracket</b>		DRAWING No. <b>BR10728-102</b>	SCALE: <b>1:4</b>		UNITS UNLESS OTHERWISE STATED		 <b>VOIDACOUSTICS.COM</b> REPRODUCTION OF ANY PART OF THIS DOCUMENT IS FORBIDDEN WITHOUT PRIOR PERMISSION FROM VOID ACOUSTICS RESEARCH LTD © DESIGN COPYRIGHT RESERVED - CONFIDENTIAL AND PROPRIETARY INFORMATION OF VOID ACOUSTICS RESEARCH LTD. Registered in England & Wales No. V0533536
PROJECT: <b>Venu 6</b>	EST. WEIGHT (kg): <b>1.77</b>	SAP No. <b>IT4323</b>	SHT 1 OF 1 SHTS		FABRICATION UNLESS OTHERWISE STATED	LINEAR - mm ANGULAR - degrees	
MATERIAL: <b>Mild Steel</b>	COLOR: <b>WHITE</b>		SHEET:	UNLESS OTHERWISE STATED	MACHINING UNLESS OTHERWISE STATED		
FINISH: <b>POWDER COAT SEMI-GLOSS</b>	TEXTURE/FINISH: <b>SMOOTH</b>		<b>A3</b>	UP TO 300mm ±0.2 300mm-500mm ±0.2 500mm-1m ±1.0 1m-5m ±2.0 ANGULAR ±1.0	0mm ±0.5 0.0mm ±0.2 0.10mm ±0.1 0.000mm ±0.01	BREAK EDGE 0.05 - 0.15 FILLET RADS 0.1 - 0.2	
				ANGULAR ±0.5			
				SURFACE TEXTURE VALUES IN MICROMETRES (µm) TO ISO 13272 ALL MACHINING SURFACES TO BE ALL SCREW THREADS TO BS3643 PT.2			